

Saga – Spirit of Discovery

July 19 – by Gemma Cunningham

Saga has taken delivery of a brand-new ship 'Spirit of Discovery', this beautiful ship has been built with the British market in mind. Attention to detail is of a very high standard with luxury comfortable seating in all areas of the ship, partitioned areas in the restaurant for a more intimate feel and a balcony for every guest cabin! (including 100 single cabins)



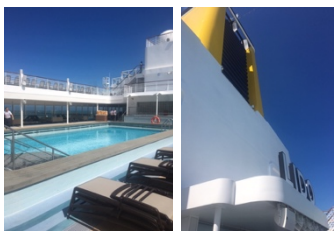
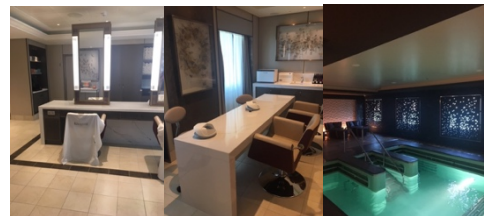
The ship is smaller than its rivals with only 999 passenger's on-board and with 554 all balcony cabins it means she can venture into smaller ports of call and gives guests a more dedicated service with this boutique style of cruising.



Décor on board is neutral with touches of blue's and greys giving a luxurious and homely feel, lighting is soft creating a warming atmosphere. Seating has been well thought out with day beds, chairs and sofas positioned in a lot of frequently used places around the ship.

The ship has all the facilities you would expect from a 444 seat theatre where guests can enjoy the entertainment performed by the resident performance company. A fully equipped gym with all the facilities you'd experience at your local gymnasium but with a view through the windows of your current port of call.

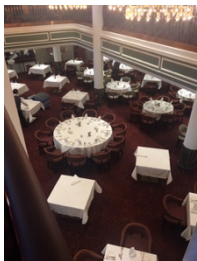
The spa area on board boosts a hydrotherapy pool, sauna, steam and treatment rooms. A visit to the salon is also highly recommended whether you are simple getting your nails done or treating your hair to something new.



There are many other great areas to visit if you are looking to take a fitness class, outdoor game's, sit with a good book in the library, relax by the outdoor pool or just walk around the fully wraparound promenade terrace.



The ships buffet style restaurant is 'The grill' for more casual dining with both indoor and outdoor areas open all day for breakfast, lunch or dinner.



'The Grand Dining room' is the ships main Al a carte restaurant with soft furnishings and exceptional service this restaurant is again open for breakfast, lunch and dinner. There are 3 specialty restaurants on board available to guests at dinner for no extra charge;

'Coast to Coast' offering seafood as its speciality,

,

East to West' serving innovative Asian cuisine or 'The Club by Jools' serving mouth-watering steaks and live evening music all adding to a great atmosphere. If you enjoy a before or after dinner drink then there are many areas on the ship whereby this can be enjoyed.



Spirit of Discovery made her maiden voyage on 10th July 2019 and has some exceedingly exciting itineraries arranged for its guests and with Spirit of Adventure due to join her in 2020 these two ships will carry guests all over the world in style! They will depart from both Dover and Southampton and with all Saga cruises guests can also enjoy; a chauffeur service to and from the Port, optional Saga travel insurance, an all-inclusive meal and drinks service, gratuities included, free Wi-Fi & 24 hour room service.

A few cruise itineraries: (All balcony cabins)

Pure Canaries from £2,934pp for 13 nights

An Italian Premier from £4860pp for 21 nights

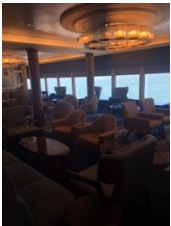
Rendezvous in Rouen from £871pp for 4 nights

Norway's night skies from £4,018pp for 15 nights

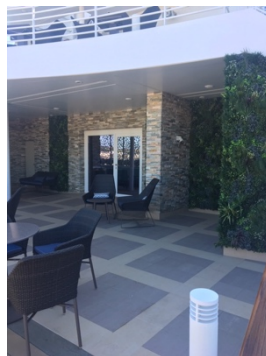
Scandinavian Cities from £2451pp for 12 nights

Hidden Adriatic from £6,035pp for 26 nights

Scenes of Dunkirk from £1,337pp for 7 nights plus many more into 2020!



The Britannia lounge



Veranda area

Standard Balcony cabin

